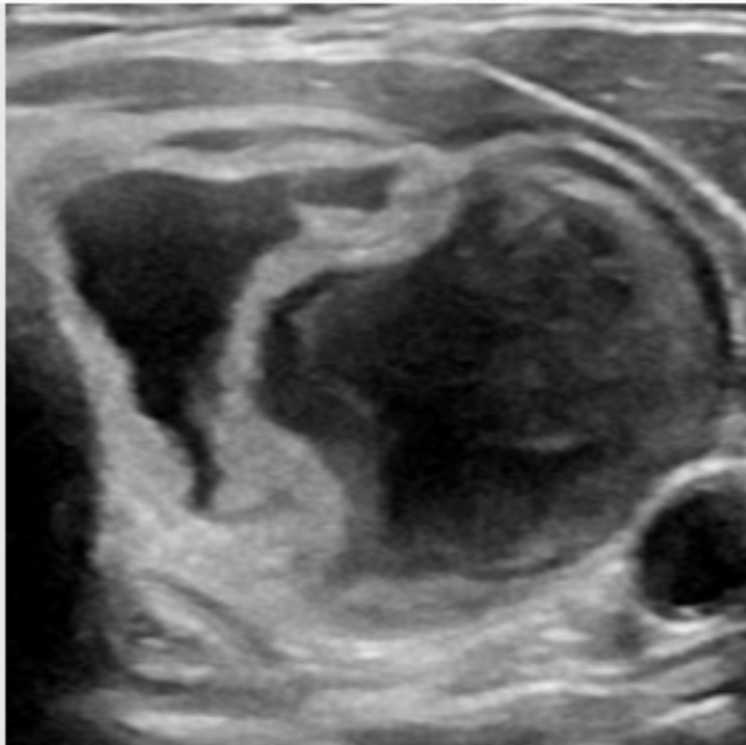


SIMILAR IMAGES

0.24s

Region of interest



◀ 1 / 4 ▶

THE MOST SIMILAR IMAGE TO THE UPLOADED IMAGE IN OUR DATABASE HAS A DIAGNOSIS OF
Benign

TI-RADS DESCRIPTION

TI-RADS	Prediction
Composition	Mixed cystic
Echogenicity	Isoechoic
Shape	Wider than tall
Margin	Ill defined
Echogenic Foci	No calcification

TI-RADS SCORE AND RECOMMENDATION

TR 2. Not suspicious, No biopsy indicated.